

FARLEIGH ROAD, STOKE NEWINGTON, N16

1 BED APARTMENT

£2,200

This spacious 500sq ft one bedroom on the first floor elegant Victorian terrace on the ever popular Farleigh Road in the heart of N16.

Beautifully presented throughout, the property features a generous open plan reception with a newly fitted kitchen spanning. The living space enjoys wooden flooring, good ceiling height.

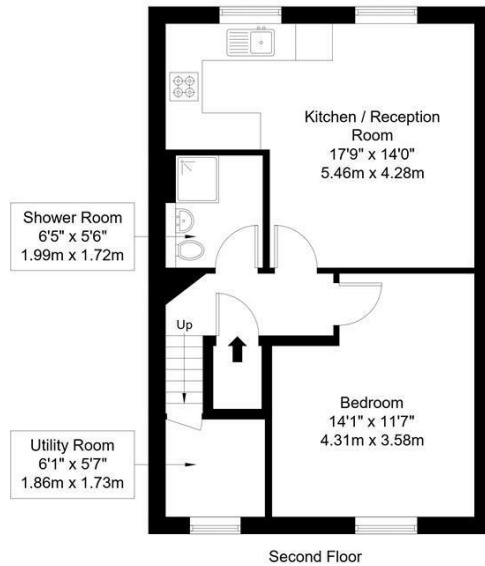
The kitchen is smartly finished with wooden worktops, metro tiled splashbacks and ample storage, and the layout flows naturally towards the bathroom which is fitted with is beautifully tiled throughout.

Farleigh Road is a tree lined residential street well placed for the many bars, restaurants and coffee houses of Stoke Newington Church Street, Newington Green and nearby Dalston. Butterfield Green and the wide open spaces of Clissold Park are also within easy reach.

Hemmingfords

Farleigh Road, N16 7TQ

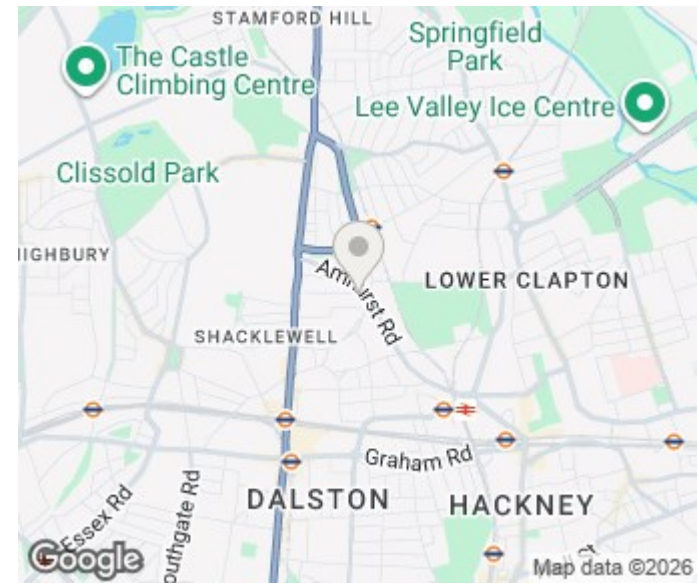
Approx Gross Internal Area = 45.86 sq m / 494 sq ft



Ref :

Copyright **BLEU PLAN**

The Floor plan is not to scale and measurements and areas shown are approximate and therefore should be used for illustrative purposes only. The plan has been prepared in accordance with the RICS code of Measuring Practice and whilst we have confidence in the information produced it must not be relied on. Maximum lengths and widths are represented on the floor plan. If there is any aspect of particular importance, you should carry out or commission your own inspection of the property.
Copyright @ BLEUPLAN



Energy Efficiency Rating		Current	Potential
Very energy efficient - lower running costs			
(92 plus) A			
(81-91) B			
(69-80) C			70
(55-68) D		55	
(39-54) E			
(21-38) F			
(1-20) G			
Not energy efficient - higher running costs			
England & Wales		EU Directive 2002/91/EC	

Agents Note: Whilst every care has been taken to prepare these particulars, they are for guidance purposes only. All measurements are approximate and are for general guidance purposes only and whilst every care has been taken to ensure their accuracy, they should not be relied upon and potential buyers/tenants are advised to recheck the measurements

Hemmingfords Lettings
34 Upper Street
London
N1 0PN

020 3890 7470
info@hemmingfords.co.uk
www.hemmingfords.co.uk

Hemmingfords